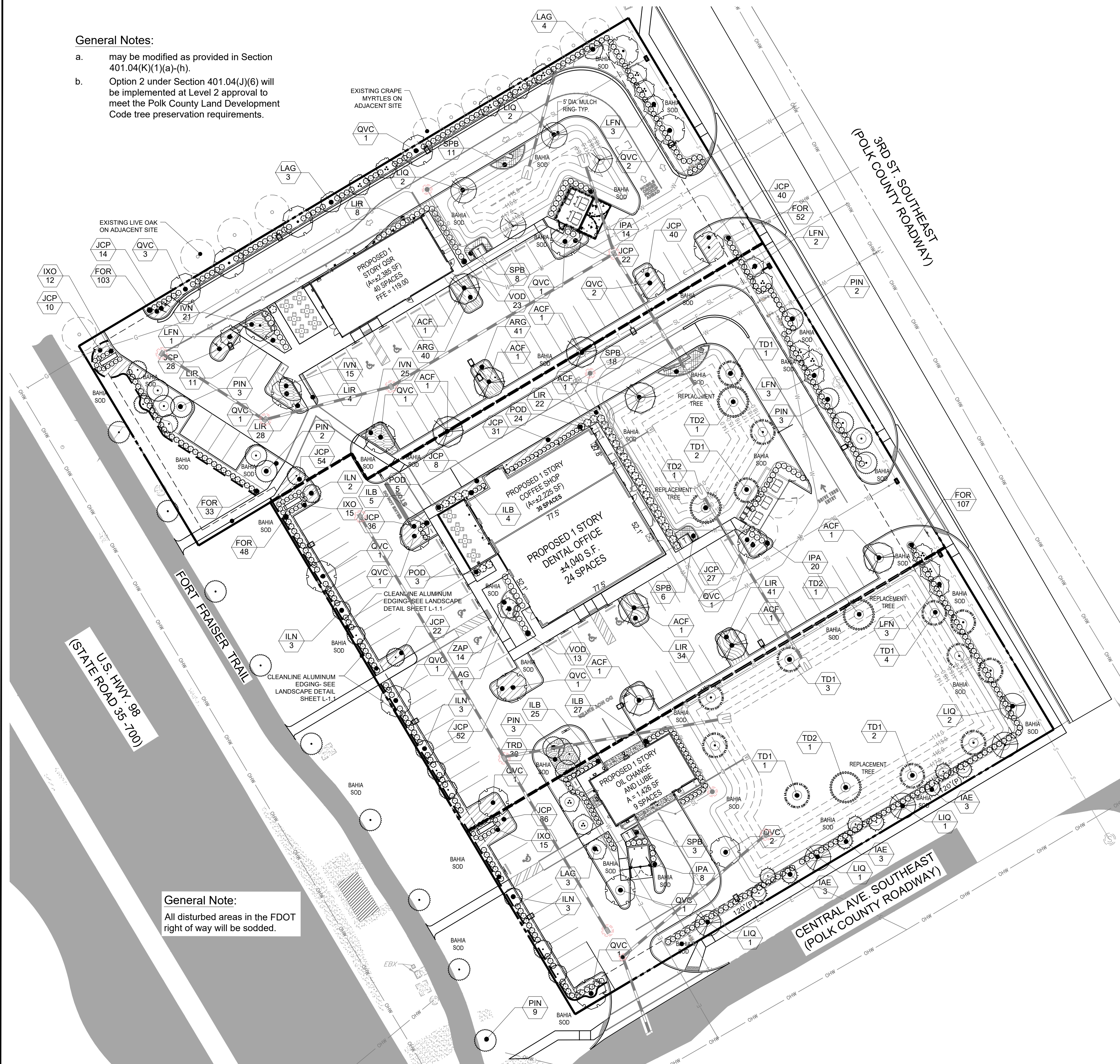


- a. may be modified as provided in Section 401.04(K)(1)(a)-(h).
- b. Option 2 under Section 401.04(J)(6) will be implemented at Level 2 approval to meet the Polk County Land Development Code tree preservation requirements.



All disturbed areas in the FDOT right of way will be sodded.

J. Ft. Fraser Trail
Canopy trees shall be installed and maintained every 50 linear feet on center.

$$\frac{445 \text{ l.f.}}{50} = \frac{9 \text{ Canopy trees required}}{9 \text{ Canopy trees provided}}$$

All development shall plant and maintain trees in accordance with the requirements of this section:

14" DBH Live Oak removed = Four (4) - 4" DBH Canopy Trees Required
Four (4) - 4" DBH Bald Cypress Trees Provided

Landscape Requirements for Parking Areas:

A minimum of 15 square feet of landscaping for each parking space shall be provided within the interior of a required paved off-street parking area.

66 parking spaces X 15 s.f. = 15 trees and 990 s.f. landscaping required
15 trees and 1,100 s.f. landscaping provided

North Property Line

$\frac{1}{2}$ Type B Buffer- 1 Canopy tree, 2 Understory trees, and 12 shrubs per 100 l.f.
344 l.f. / 100 = 4 Canopy trees, 7 Understory trees and 42 shrubs required
 4 Canopy trees, 7 Understory trees and 42 shrubs provided

SYMBOL	CODE	QTY	BOTANICAL / COMMON NAME	SIZE
TREES				
	ACF	9	ACER RUBRUM 'FLORIDA FLAME' / FLORIDA FLAME RED MAPLE	30 GAL., 2" CAL., 10' HT. X 4' SPD.
	ILN	14	ILEX CASSINE 'NATIVA' / NATIVA DAHOON HOLLY	30 GAL., 2" CAL., 8' HT. X 3' SPD., FULL TO GROUND
	IAE	9	ILEX x ATTENUATA 'EAGLESTON' / EAGLESTON HOLLY	30 GAL. 2" CAL., 9' HT. X 3' SPD., FULL TO GROUND
	LAG	11	LAGERSTROEMIA INDICA x FAURIEI 'NATCHEZ' / NATCHEZ CRAPE MYRTLE	30 GAL., 2" CAL., 9' HT. X 3' SPD., STANDARD
	LFN	12	LAGERSTROEMIA x 'ACOMA' / 'ACOMA' CRAPE MYRTLE MULTI-TRUNK	30 GAL., 2" CAL., 9' HT. X 3' SPD., STANDARD
	LIQ	9	LIQUIDAMBAR ROTUNDILOBA / SWEET GUM	30 GAL., 2" CAL., 10' HT. X 3' SPD.
	PIN	22	PINUS ELLIOTTII / SLASH PINE	FIELDGROWN, 4" CAL., 14' - 16' HT. X 5' SPD.
	QVC	21	QUERCUS VIRGINIANA / CATHEDRAL OAK	45 GAL., 2.5" CAL., 12' HT. X 4' SPD.
	TD1	13	TAXODIUM DISTICHUM 'AUTUMN GOLD' / BALD CYPRESS	FIELDGROWN, 3" CAL., 12' - 14' HT. X 5' SPD.
	TD2	4	TAXODIUM DISTICHUM 'AUTUMN GOLD' / BALD CYPRESS	FIELDGROWN, 6" CAL., 16' HT. X 5' SPD.
SHRUBS				
	FOR	385	FORESTIERA SEGREGATA / FLORIDA PRIVET	7 GAL., 30" HT. X 24" SPD., @ 3' O.C. SPACING
	ILB	79	ILEX CORNUTA 'BURFORDII' / BURFORD HOLLY	3 GAL., 24" HT. X 18" SPD., @ 30" O.C. SPACING
	IPA	42	ILLICIAM PARVIFLORUM / ANISE	7 GAL., 30" HT. X 24" SPD., @ 3' O.C. SPACING
	IXO	42	IXORA x 'RED' / RED IXORA	3 GAL., 24" HT. X 18" SPD., @ 30" O.C. SPACING
	POD	33	PODOCARPUS MACROPHYLLA / PODOCARPUS	15 GAL., 4" HT. X 36" SPD., @ 4' O.C. SPACING
	VOD	44	VIBURNUM ODORATISSIMUM / SWEET VIBURNUM	3 GAL., 30" HT. X 18" SPD., @ 3' O.C. SPACING
SHRUB AREAS				
	IVN	61	ILEX VOMITORIA 'SCHILLINGS' / SCHILLINGS YAUPON HOLLY	3 GAL., 12" HT. X 12" SPD., @ 30" O.C. SPACING
	SPB	46	SPARTINA BAKERI / SAND CORDGRASS	3 GAL., 24" HT. X 24" SPD., @ 3' O.C. SPACING
	TRD	30	TRIPSACUM DACTYLOIDES NANA / DWARF FAKAHATCHEE GRASS	3 GAL., 24" HT. X 24" SPD., @ 3' O.C. SPACING
	ZAP	14	ZAMIA FLORIDANA / COONTIE PALM	3 GAL., 15" HT. X 15" SPD., @ 30" O.C. SPACING
GROUND COVERS				
	ARG	81	ARACHIS GLABRATA 'ECOTURF' / PERENNIAL PEANUT	1 GAL., FULL @ 24" O.C. SPACING
	JCP	491	JUNIPERUS CHINENSIS 'PARSONII' / PARSON'S JUNIPER	1 GAL., 12" HT., FULL @ 24" O.C. SPACING
	LIR	148	LIRIOPE MUSCARI 'BIG BLUE' / BIG BLUE LILYTURF	1 GAL., 12" HT., FULL @ 24" O.C. SPACING

ALL SOD TO BE ARGENTINE BAHIA SOD ; SOLID PANELS (98% WEED FREE)

ALL MULCH TO BE DOUBLE-GROUND HARDWOOD MULCH; COLOR COCOA BROWN. INSTALL A MINIMUM 2"- 3" THICK IN ALL PLANTING AREAS.

Wherever a vehicular use area abuts a right-of-way, a perimeter landscape strip shall be created which meets the minimum standards shown as roadways/streets on Table 7.13. Such areas shall be no less than four (4) feet in width.

Type A Buffer- 2 Canopy trees, 3 Understory trees, and 33 shrubs per 100 l.f.

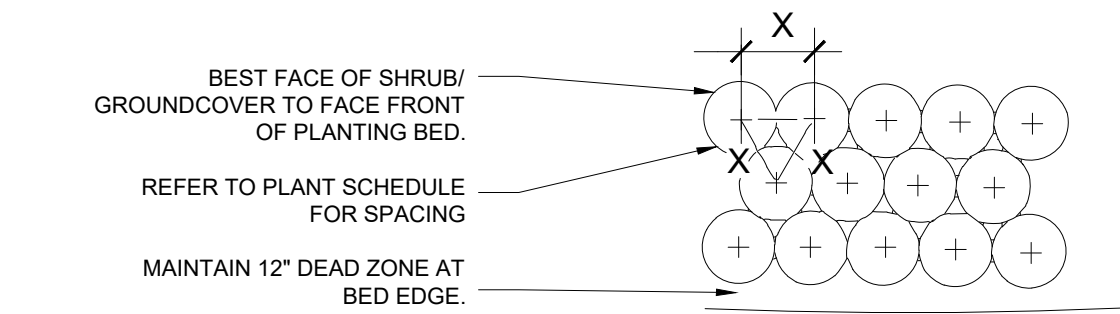
445 l.f. / 100 = 9 Canopy trees, 14 Understory trees and 147 shrubs required
9 Canopy trees, 14 Understory trees and 147 shrubs provided

Type A Buffer- 2 Canopy trees, 3 Understory trees, and 33 shrubs per 100 l.f.

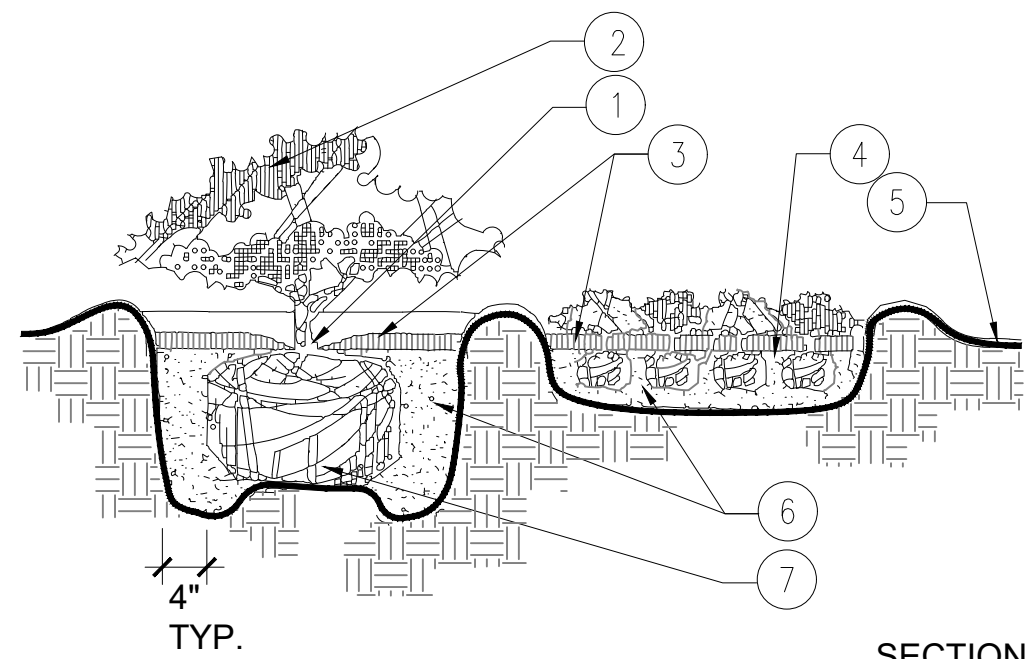
445 l.f. / 100 = 9 Canopy trees, 14 Understory trees and 147 shrubs required
9 Canopy trees, 14 Understory trees and 147 shrubs provided

Type A Buffer- 2 Canopy trees, 3 Understory trees, and 33 shrubs per 100 l.f.

$$\frac{300 \text{ l.f.}}{100} = \frac{6 \text{ Canopy trees, } 9 \text{ Understory trees and } 99 \text{ shrubs required}}{6 \text{ Canopy trees, } 9 \text{ Understory trees and } 99 \text{ shrubs provided}}$$

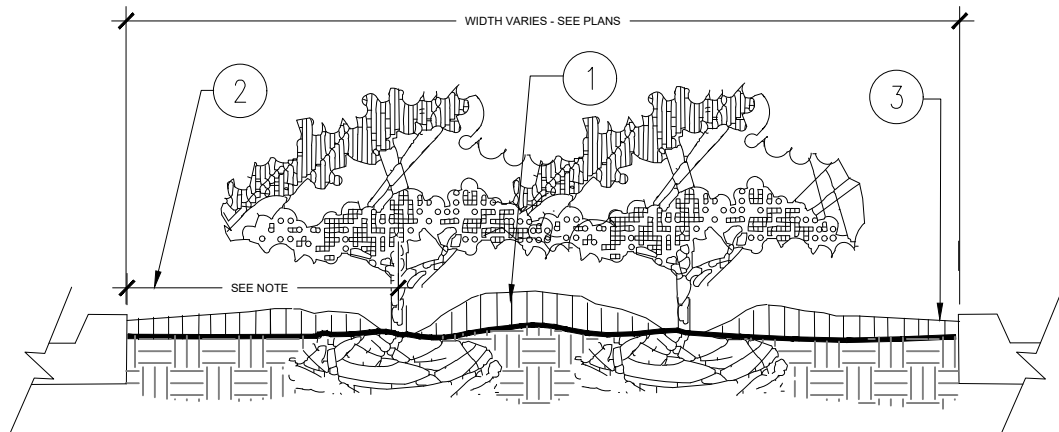
PLAN



SECTION

NOTES:

1. TOP OF SHRUB ROOTBALLS TO BE PLANTED 1" - 2" HIGH WITH SOIL MOUNDING UP TO THE TOP OF ROOTBALL.
2. PRUNE ALL SHRUBS TO ACHIEVE A UNIFORM MASS/HEIGHT.
3. 3" MINIMUM MULCH AS SPECIFIED.
4. EXCAVATE ENTIRE BED SPECIFIED FOR GROUNDCOVER BED.
5. FINISHED GRADE (SEE GRADING PLAN).
6. PREPARED PLANTING SOIL AS SPECIFIED. (SEE LANDSCAPE NOTES) NOTE: WHEN GROUND- COVERS AND SHRUBS USED IN MASSES, ENTIRE BED TO BE AMENDED WITH PLANTING SOIL MIX AS SPECIFIED.
7. SCARIFY ROOTBALL SIDES AND BOTTOM.



PLANTER ISLAND NOTES:

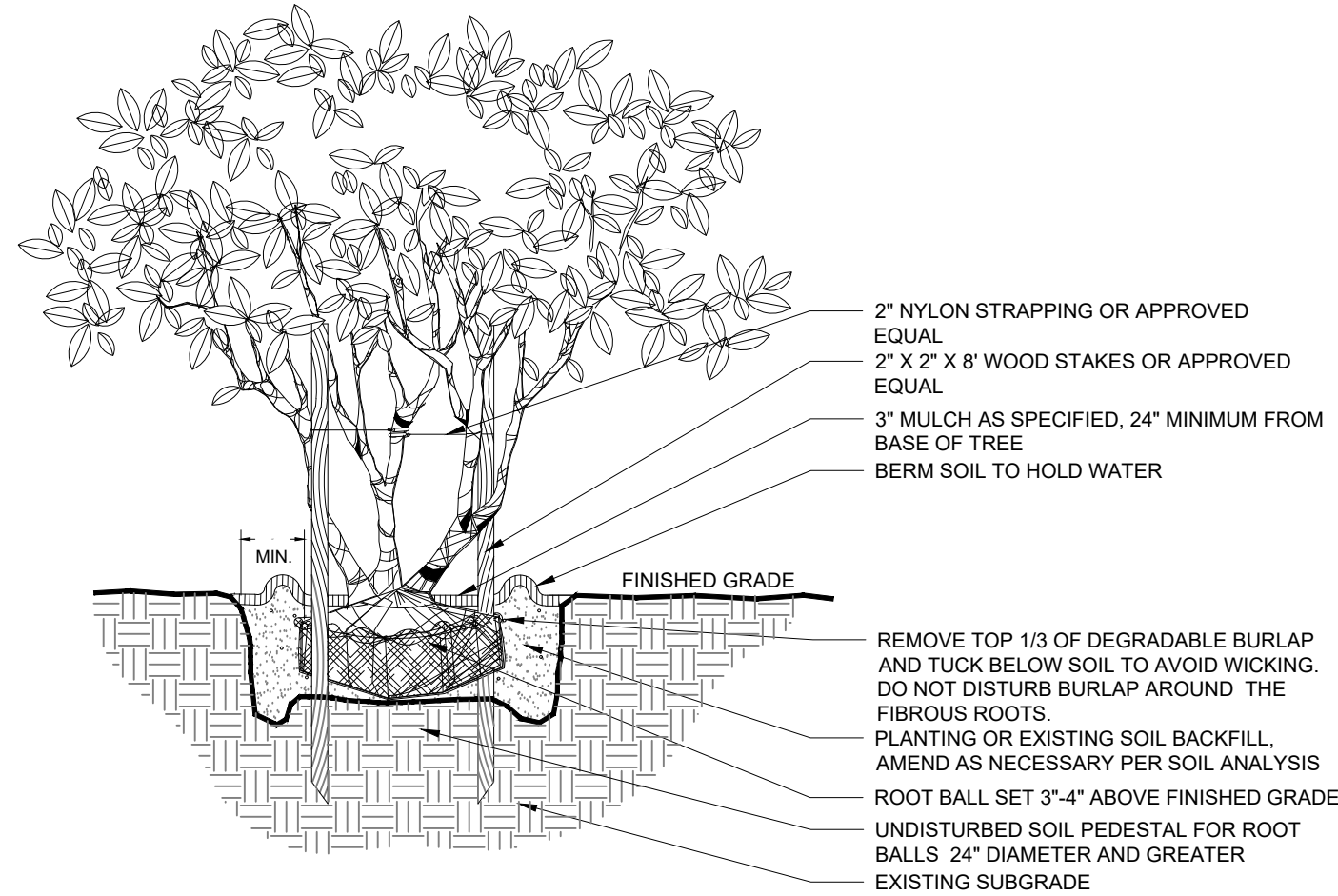
1. CROWN ISLANDS @ 5:1 SLOPES (OR AS SPECIFIED ON THE LANDSCAPE PLANS).
2. CLEAR ZONE: 36" MIN. FROM BACK OF CURB TO CENTER OF NEAREST SHRUB. CLEAR ZONE SHALL CONTAIN 3" CONTINUOUS MULCH OR TURF. SEE PLANS.
3. 2" MIN VERTICAL CLEARANCE, TOP OF CURB TO TOP OF MULCH.

NOTES:

- a. EXCAVATE A CONTINUOUS 24" DEEP PIT (FROM TOP OF CURB) FOR ENTIRE LENGTH AND WIDTH OF ISLAND & BACKFILL WITH APPROVED PLANTING MIX. PROTECT AND RETAIN ALL CURBS AND BASE. COMPACTED SUBGRADE TO REMAIN FOR STRUCTURAL SUPPORT OF CURB SYSTEM (TYP).
- b. ALL ISLANDS SHALL UTILIZE POOR DRAINAGE DETAIL WHEN PERCOLATION RATES ARE 2" PER HOUR OR LESS.
- c.

NOTES:

1. CONTRACTOR SHALL ENSURE FREE DRAINAGE/PERCOLATION OF ALL PLANTING PITS PRIOR TO INSTALLATION.
2. ALL TREE PITS SHALL BE APPROXIMATELY 1.5 TIMES LARGER THAN ROOT BALL.
3. FINAL TREE STAKING DETAILS AND PLACEMENT TO BE APPROVED BY THE LANDSCAPE ARCHITECT.
4. PRESSURE TREATED PINE TO BE USED FOR ALL WOOD STAKING AND BRACING MEMBERS.



1 SHRUB / GROUNDCOVER PLANTING

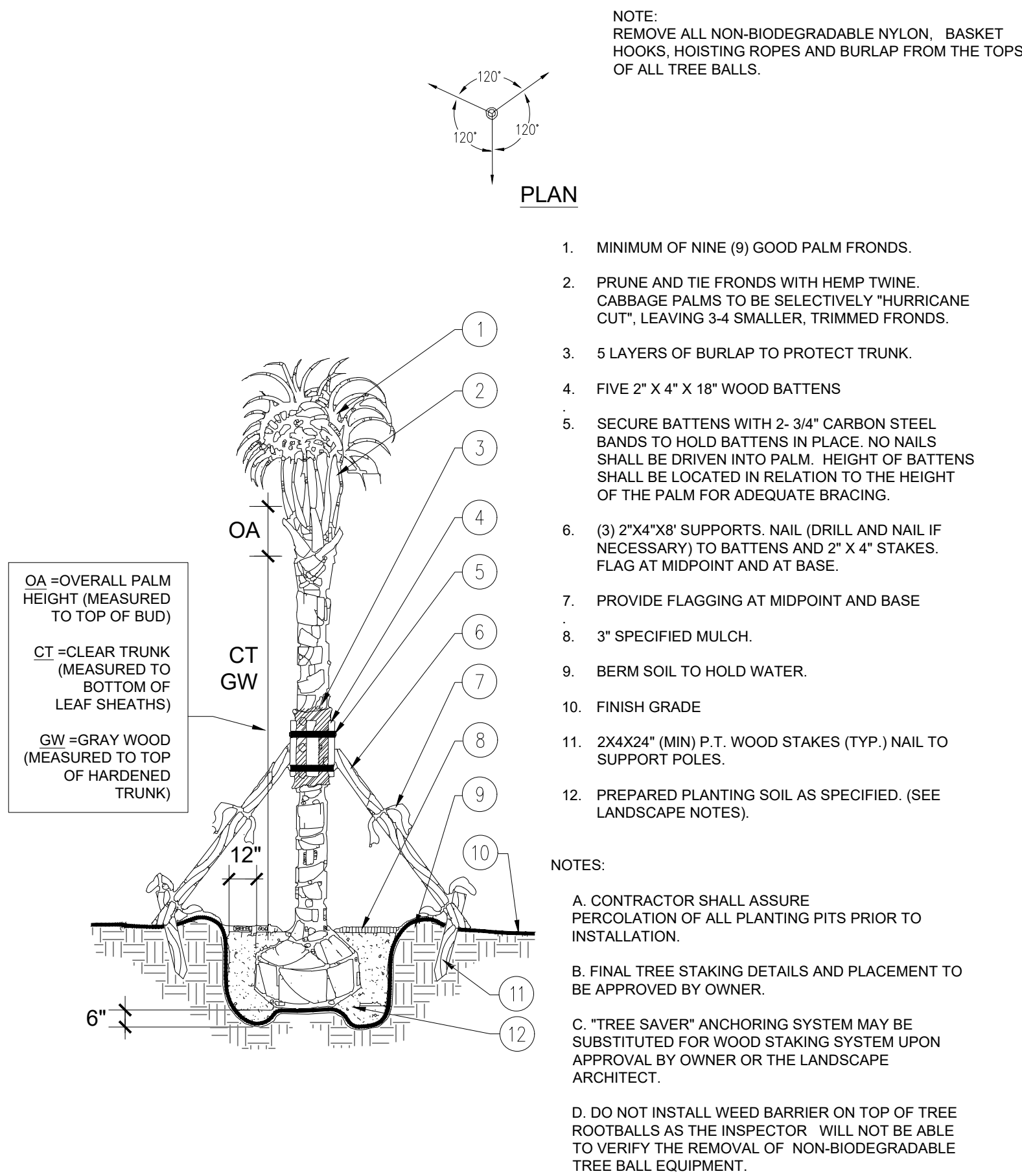
NOT TO SCALE

2 PARKING LOT ISLAND PLANTING

NOT TO SCALE

3 MULTI-TRUNK TREE PLANTING DETAIL

NOT TO SCALE

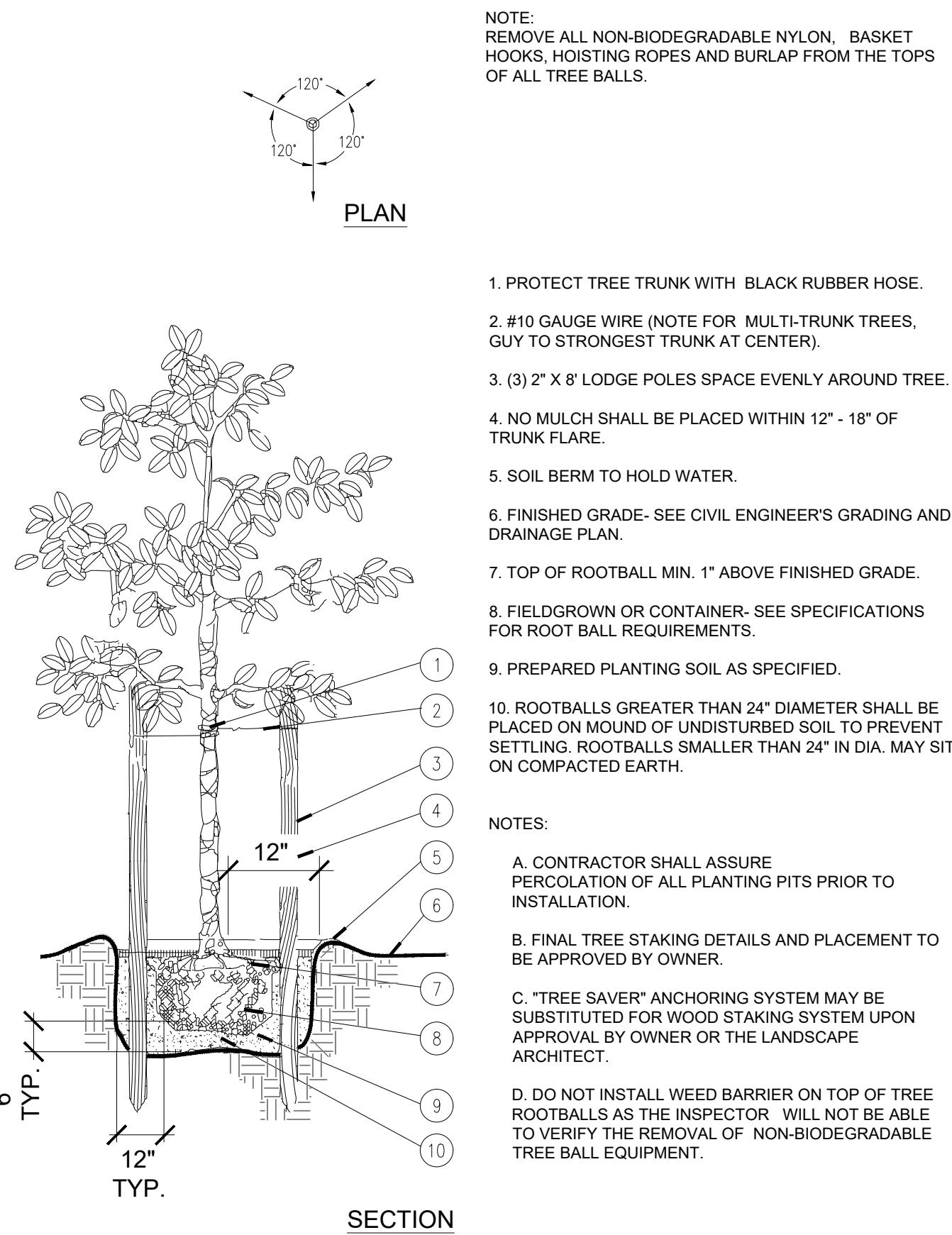


PLAN

1. MINIMUM OF NINE (9) GOOD PALM FRONDS.
2. PRUNE AND TIE FRONDS WITH HEMP TWINE. CABBAGE PALMS TO BE SELECTIVELY "HURRICANE CUT", LEAVING 3-4 SMALLER, TRIMMED FRONDS.
3. 5 LAYERS OF BURLAP TO PROTECT TRUNK.
4. FIVE 2" X 4" X 18" WOOD BATTENS
5. SECURE BATTENS WITH 2 - 3/4" CARBON STEEL BANDS TO HOLD BATTENS IN PLACE. NO NAILS SHALL BE DRIVEN INTO PALM. HEIGHT OF BATTENS SHALL BE LOCATED IN RELATION TO THE HEIGHT OF THE PALM FOR ADEQUATE BRACING.
6. (3) 2"X4"X8' SUPPORTS. NAIL (DRILL AND NAIL IF NECESSARY) TO BATTENS AND 2" X 4" STAKES. FLAG AT MIDPOINT AND AT BASE.
7. PROVIDE FLAGGING AT MIDPOINT AND BASE
8. 3" SPECIFIED MULCH.
9. BERM SOIL TO HOLD WATER.
10. FINISH GRADE
11. 2X4X24" (MIN) P.T. WOOD STAKES (TYP.) NAIL TO SUPPORT POLES.
12. PREPARED PLANTING SOIL AS SPECIFIED. (SEE LANDSCAPE NOTES).

NOTES:

- A. CONTRACTOR SHALL ASSURE PERCOLATION OF ALL PLANTING PITS PRIOR TO INSTALLATION.
- B. FINAL TREE STAKING DETAILS AND PLACEMENT TO BE APPROVED BY OWNER.
- C. "TREE SAVER" ANCHORING SYSTEM MAY BE SUBSTITUTED FOR WOOD STAKING SYSTEM UPON APPROVAL BY OWNER OR THE LANDSCAPE ARCHITECT.
- D. DO NOT INSTALL WEED BARRIER ON TOP OF TREE ROOTBALLS AS THE INSPECTOR WILL NOT BE ABLE TO VERIFY THE REMOVAL OF NON-BIODEGRADABLE TREE BALL EQUIPMENT.



PLAN

SECTION

NOTE:

REMOVE ALL NON-BIODEGRADABLE NYLON, BASKET HOOKS, HOISTING ROPES AND BURLAP FROM THE TOPS OF ALL TREE BALLS.

1. PROTECT TREE TRUNK WITH BLACK RUBBER HOSE.
2. #10 GAUGE WIRE (NOTE FOR MULTI-TRUNK TREES, GUY TO STRONGEST TRUNK AT CENTER).
3. (3) 2" X 8' LODGE POLES SPACE EVENLY AROUND TREE.
4. NO MULCH SHALL BE PLACED WITHIN 12" - 18" OF TRUNK FLARE.
5. SOIL BERM TO HOLD WATER.
6. FINISHED GRADE- SEE CIVIL ENGINEER'S GRADING AND DRAINAGE PLAN.
7. TOP OF ROOTBALL MIN. 1" ABOVE FINISHED GRADE.
8. FIELD-GROWN OR CONTAINER- SEE SPECIFICATIONS FOR ROOT BALL REQUIREMENTS.
9. PREPARED PLANTING SOIL AS SPECIFIED.
10. ROOTBALLS GREATER THAN 24" DIAMETER SHALL BE PLACED ON MOUND OF UNDISTURBED SOIL TO PREVENT SETTLING. ROOTBALLS SMALLER THAN 24" IN DIA. MAY SIT ON COMPACTED EARTH.

NOTES:

- A. CONTRACTOR SHALL ASSURE PERCOLATION OF ALL PLANTING PITS PRIOR TO INSTALLATION.
- B. FINAL TREE STAKING DETAILS AND PLACEMENT TO BE APPROVED BY OWNER.
- C. "TREE SAVER" ANCHORING SYSTEM MAY BE SUBSTITUTED FOR WOOD STAKING SYSTEM UPON APPROVAL BY OWNER OR THE LANDSCAPE ARCHITECT.
- D. DO NOT INSTALL WEED BARRIER ON TOP OF TREE ROOTBALLS AS THE INSPECTOR WILL NOT BE ABLE TO VERIFY THE REMOVAL OF NON-BIODEGRADABLE TREE BALL EQUIPMENT.

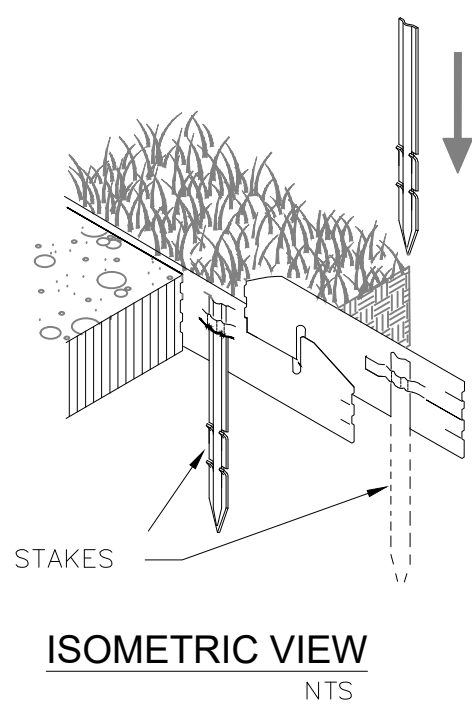
SIZE:
3/16" X 5 1/2" (4.8MM X 140MM) 0.116" (2.95MM) THICK
w/ 0.187" (4.75MM) EXPOSED TOP LIP

FINISH LEGEND:

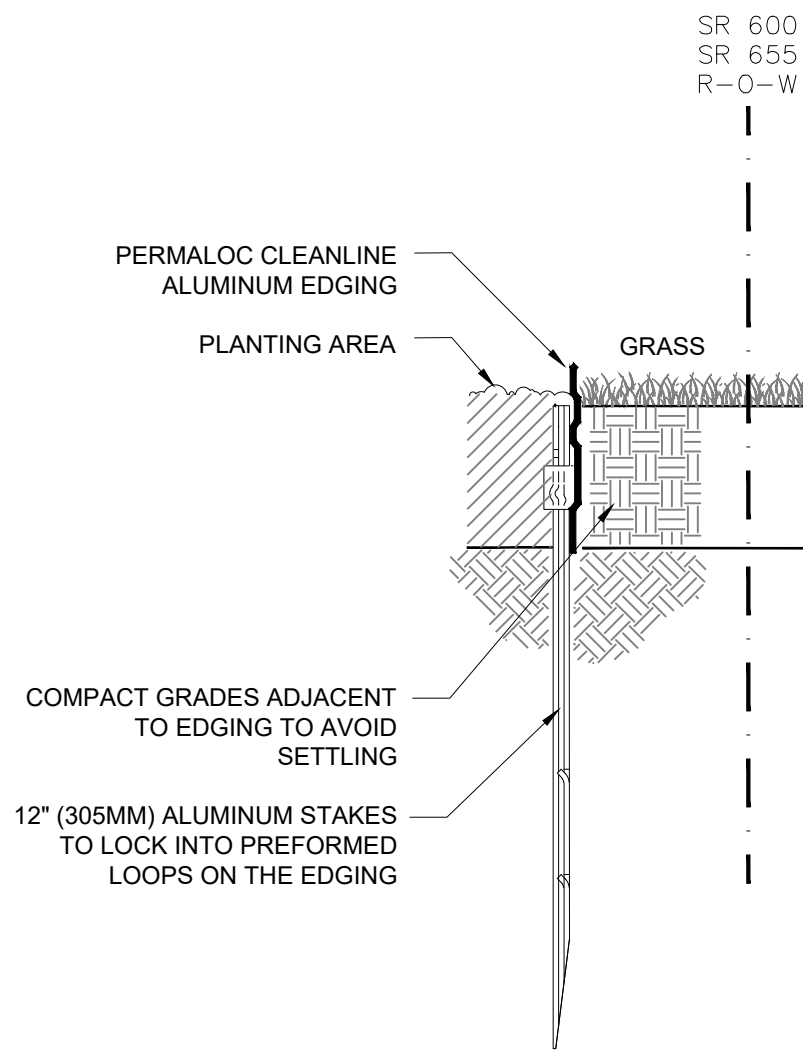
(MF) MILL FINISH-NATURAL ALUMINUM

NOTES:

1. INSTALL PER MANUFACTURER'S "INSTALLATION GUIDELINES"
2. 8'-0" (2.44 M) SECTIONS TO INCLUDE (3) 12" (305 MM) ALUMINUM STAKES. 16'-0" (4.88 M) SECTIONS TO INCLUDE (5) 12" (305 MM) ALUMINUM STAKES. CORNERS - CUT BASE EDGING UP HALF-WAY AND FORM A CONTINUOUS CORNER. PERMALOC CLEANLINE AS MANUFACTURED BY PERMALOC CORPORATION, HOLLAND MI. (800) 358-9660, (616) 399-9600
3. CONTRACTOR'S NOTE: FOR PRODUCT AND PURCHASING INFORMATION VISIT:WWW.PERMALOC.COM



ISOMETRIC VIEW
NTS



NOT TO SCALE

4 PALM PLANTING DETAIL

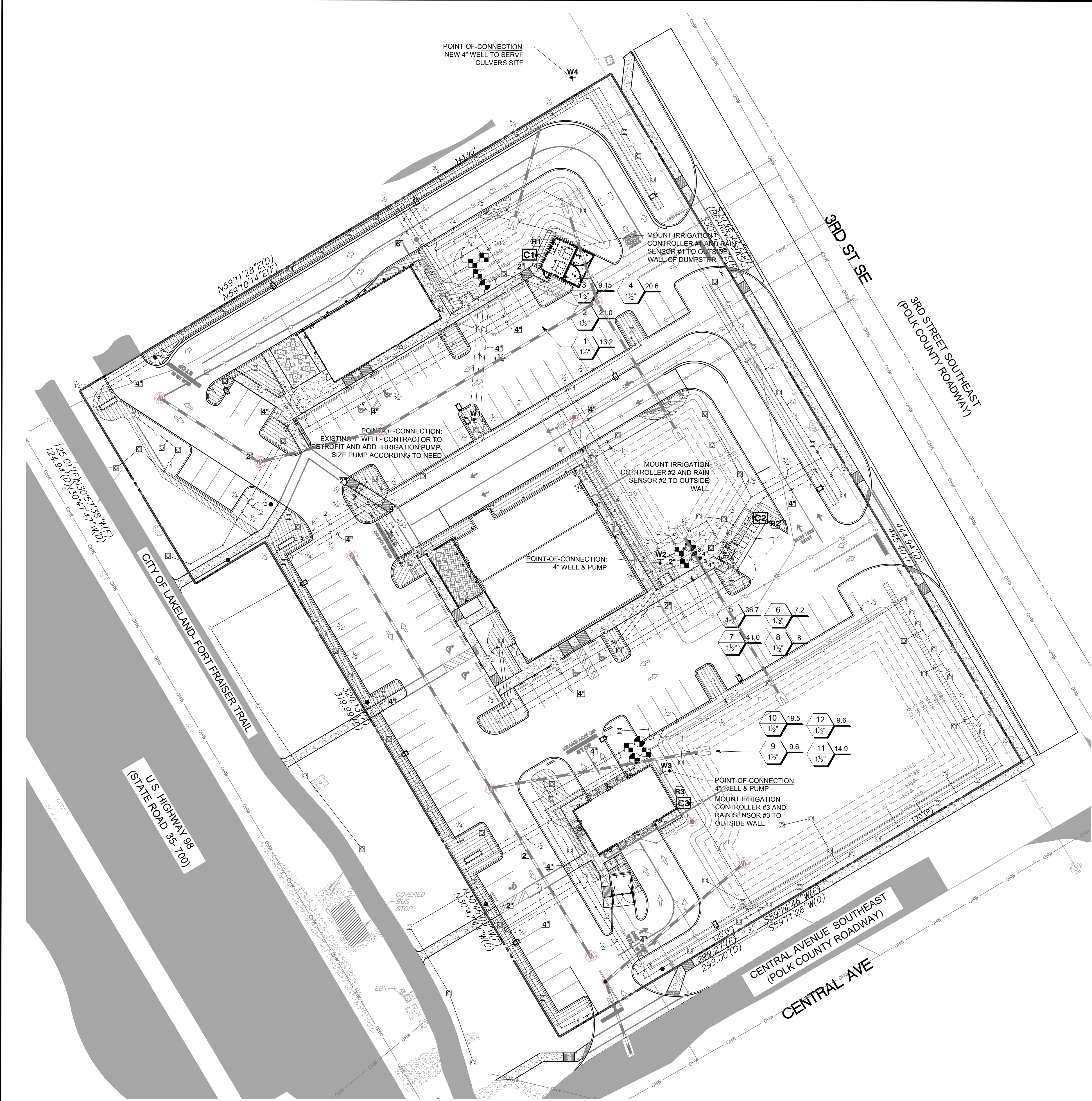
NOT TO SCALE

5 CANOPY TREE PLANTING DETAIL

NOT TO SCALE

6 CLEANLINE ALUMINUM EDGING DETAIL

NOT TO SCALE

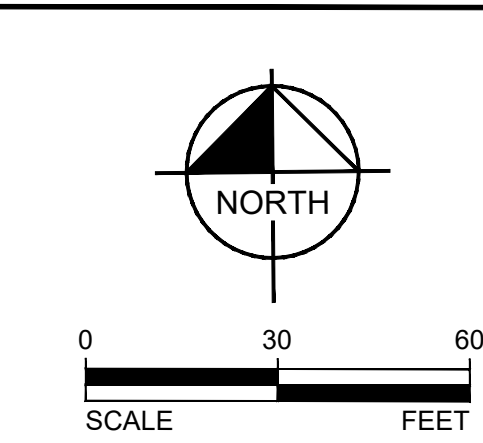


IRRIGATION SCHEDULE

SYMBOL	MANUFACTURER/MODEL/DESCRIPTION	QTY	PSI
	RAIN BIRD 1804-SAM-5 SERIES STREAM W/ PCS 5CST-020 STREAM BUBBLER 4" POPUP WITH CHECK VALVE AND PRESSURE COMPENSATING SCREEN.	103	30
SYMBOL	MANUFACTURER/MODEL/DESCRIPTION	QTY	
	RAIN BIRD XCZ-150-LCDR 1-1/2" HIGH FLOW CONTROL ZONE KIT, FOR LARGE COMMERCIAL DRIP ZONES. 1-1/2" PESB-R SCRUBBER GLOBE VALVE WITH SINGLE 1-1/2" PRESSURE REGULATING 40PSI QUICK-CHECK BASKET FILTERS. FLOW RANGE: 15-62 GPM.	7	
	AREA TO RECEIVE DRIPLINE RAIN BIRD XFD-09-18-NP XFD ON-SURFACE PRESSURE COMPENSATING LANDSCAPE DRIPLINE. 0.9 GPH EMITTERS AT 12" O.C. DRIPLINE LATERALS SPACED AT 12" APART, WITH EMITTERS OFFSET FOR TRIANGULAR PATTERN. UV RESISTANT. SPECIFY XF INSERT FITTINGS.	10,632 LF	
SYMBOL	MANUFACTURER/MODEL/DESCRIPTION	QTY	
	RAIN BIRD PESBR 1-1/2" 1", 1-1/2", AND 2" DURABLE CHLORINE-RESISTANT VALVES FOR RECLAIMED WATER APPLICATIONS. WITH SCRUBBER MECHANISM TECHNOLOGY, AND PURPLE FLOW CONTROL HANDLE.	5	
	RAIN BIRD ESP8LXME-LXMM 8 STATION TRADITIONALLY-WIRED, COMMERCIAL CONTROLLER, INDOOR/OUTDOOR, PLASTIC WALL-MOUNT ENCLOSURE. INSTALL IN LXMM POWDER COATED, METAL WALL-MOUNTED CABINET.	1	
	RAIN BIRD ESP8LXME-LXMM 8 STATION TRADITIONALLY-WIRED, COMMERCIAL CONTROLLER, INDOOR/OUTDOOR, PLASTIC WALL-MOUNT ENCLOSURE. INSTALL IN LXMM POWDER COATED, METAL WALL-MOUNTED CABINET.	1	
	RAIN BIRD ESP8LXME-LXMM 8 STATION TRADITIONALLY-WIRED, COMMERCIAL CONTROLLER, INDOOR/OUTDOOR, PLASTIC WALL-MOUNT ENCLOSURE. INSTALL IN LXMM POWDER COATED, METAL WALL-MOUNTED CABINET.	1	
	RAIN BIRD RSD-BEX RAIN SENSOR, WITH METAL LATCHING BRACKET, EXTENSION WIRE.	1	
	RAIN BIRD RSD-BEX RAIN SENSOR, WITH METAL LATCHING BRACKET, EXTENSION WIRE.	1	
	RAIN BIRD RSD-BEX RAIN SENSOR, WITH METAL LATCHING BRACKET, EXTENSION WIRE.	1	
	POINT OF CONNECTION 4" 4" WELL & PUMP	1	
	POINT OF CONNECTION 4" 4" WELL & PUMP	1	
	POINT OF CONNECTION 4" 4" WELL & PUMP	1	
	IRRIGATION LATERAL LINE: PVC SCHEDULE 40	1,166 LF	
	IRRIGATION LATERAL LINE: PVC SCHEDULE 40 1/2"	1,752 LF	
	IRRIGATION LATERAL LINE: PVC SCHEDULE 40 3/4"	994.3 LF	
	IRRIGATION LATERAL LINE: PVC SCHEDULE 40 1"	848.4 LF	
	IRRIGATION LATERAL LINE: PVC SCHEDULE 40 1 1/4"	561.2 LF	
	IRRIGATION LATERAL LINE: PVC SCHEDULE 40 1 1/2"	6.9 LF	
	IRRIGATION MAINLINE: PVC SCHEDULE 40	159.3 LF	
	PIPE SLEEVE: PVC CLASS 200 SDR 21	60.0 LF	
	PIPE SLEEVE: PVC CLASS 200 SDR 21 2"	168.2 LF	
	PIPE SLEEVE: PVC CLASS 200 SDR 21 4"	504.7 LF	
	PIPE SLEEVE: PVC CLASS 200 SDR 21 6"	24.3 LF	
	Valve Colour Valve Number Valve Flow Valve Size		

VALVE SCHEDULE

NUMBER	MODEL	SIZE	TYPE	GPM	WIRE	PSI	PSI @ POC	PRECIP
1	RAIN BIRD PESBR	1-1/2"	BUBBLER	13.2		39.3	40.2	6.13 in/h
2	RAIN BIRD XCZ-150-LCDR	1-1/2"	AREA FOR DRIPLINE	20.96		40.9	43.3	1.45 in/h
3	RAIN BIRD XCZ-150-LCDR	1-1/2"	AREA FOR DRIPLINE	9.15		37.7	38.3	1.44 in/h
4	RAIN BIRD XCZ-150-LCDR	1-1/2"	AREA FOR DRIPLINE	20.63		38.1	40.8	1.44 in/h
5	RAIN BIRD XCZ-150-LCDR	1-1/2"	AREA FOR DRIPLINE	36.66		41.2	41.4	1.44 in/h
6	RAIN BIRD PESBR	1-1/2"	BUBBLER	7.2		40.1	40.5	6.13 in/h
7	RAIN BIRD XCZ-150-LCDR	1-1/2"	AREA FOR DRIPLINE	41.0		41.0	41.2	1.44 in/h
8	RAIN BIRD PESBR	1-1/2"	BUBBLER	8		38.4	38.9	6.13 in/h
9	RAIN BIRD PESBR	1-1/2"	BUBBLER	9.6		39.5	39.8	6.13 in/h
10	RAIN BIRD XCZ-150-LCDR	1-1/2"	AREA FOR DRIPLINE	19.55		41.3	41.6	1.44 in/h
11	RAIN BIRD XCZ-150-LCDR	1-1/2"	AREA FOR DRIPLINE	14.91		40.7	41.0	1.44 in/h
12	RAIN BIRD PESBR	1-1/2"	BUBBLER	9.6		39.5	39.8	6.13 in/h
	Common Wire					159.5		



ALOHA PACIFICA LLC
LANDSCAPE ARCHITECTURE • WATER FEATURES
401 A.E. FARIBANS AVENUE, WINTER PARK, FLORIDA 32789
(407) 588-8622 OFFICE ALOHAPACIFIC@GMAIL.COM

SCALE AS NOTED
DESIGNED BY GR
DRAWN BY BW
CHECKED BY GR

IRRIGATION PLAN

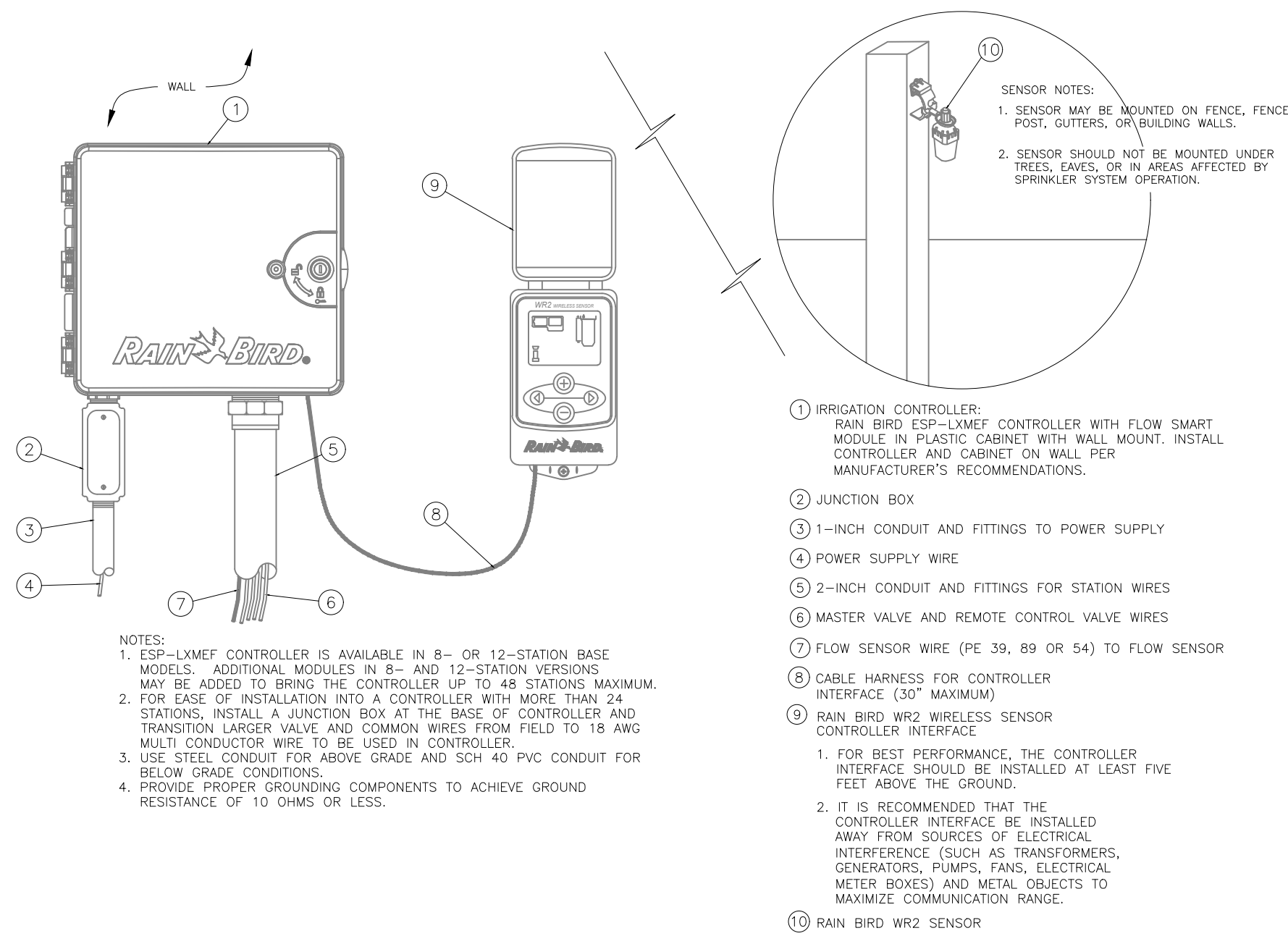
4255 CLUBHOUSE RD SE
LAKELAND, FL
& 5433 3RD ST
HIGHLAND CITY, FL

POLK COUNTY
FLORIDA

DATE
05/05/26
PROJECT NO.
SHEET NUMBER
L-2.0

PER CLIENT COMMENTS
05/05/26 BW
DATE
BY

REVISIONS
No.



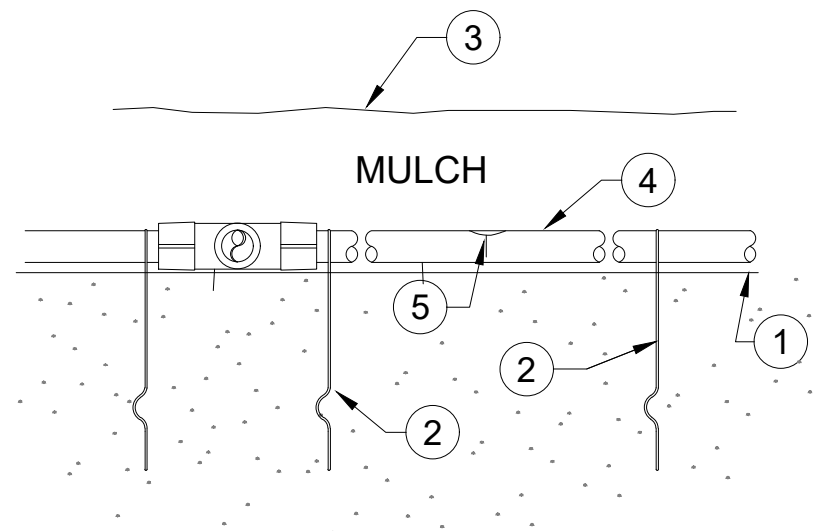
NOTES:
1. ESP-LXMEF CONTROLLER IS AVAILABLE IN 8- OR 12-STATION BASE MODELS. ADDITIONAL MODULES IN 8- AND 12-STATION VERSIONS MAY BE ADDED TO BRING THE CONTROLLER UP TO 48 STATIONS MAXIMUM.
2. FOR EASE OF INSTALLATION INTO A CONTROLLER WITH MORE THAN 24 STATIONS, INSTALL A JUNCTION BOX AT THE BASE OF CONTROLLER AND TRANSITION LARGER VALVE AND COMMON WIRES FROM FIELD TO 18 AWG MULTI CONDUCTOR WIRE TO BE USED IN CONTROLLER.
3. USE STEEL CONDUIT FOR ABOVE GRADE AND SCH 40 PVC CONDUIT FOR BELOW GRADE CONDITIONS.
4. PROVIDE PROPER GROUNDING COMPONENTS TO ACHIEVE GROUND RESISTANCE OF 10 OHMS OR LESS.

1. IRRIGATION CONTROLLER: RAIN BIRD ESP-LXMEF CONTROLLER WITH FLOW SMART MODULE IN PLASTIC CABINET WITH WALL MOUNT. INSTALL CONTROLLER AND CABINET ON WALL PER MANUFACTURER'S RECOMMENDATIONS.
2. JUNCTION BOX
3. 1-INCH CONDUIT AND FITTINGS TO POWER SUPPLY
4. POWER SUPPLY WIRE
5. 2-INCH CONDUIT AND FITTINGS FOR STATION WIRES
6. MASTER VALVE AND REMOTE CONTROL VALVE WIRES
7. FLOW SENSOR WIRE (PE 39, 89 OR 54) TO FLOW SENSOR
8. CABLE HARNESS FOR CONTROLLER INTERFACE (30" MAXIMUM)
9. RAIN BIRD WR2 WIRELESS SENSOR CONTROLLER INTERFACE
1. FOR BEST PERFORMANCE, THE CONTROLLER INTERFACE SHOULD BE INSTALLED AT LEAST FIVE FEET ABOVE THE GROUND.
2. IT IS RECOMMENDED THAT THE CONTROLLER INTERFACE BE INSTALLED AWAY FROM SOURCES OF ELECTRICAL INTERFERENCE (SUCH AS TRANSFORMERS, GENERATORS, PUMPS, FANS, ELECTRICAL METER BOXES) AND METAL OBJECTS TO MAXIMIZE COMMUNICATION RANGE.

10. RAIN BIRD WR2 SENSOR

1 IRRIGATION CONTROLLER W/ RAIN SENSOR

NTS



NOTES:
1. PLACE TIE DOWN STAKES EVERY 3-FEET IN SAND, 4-FEET IN LOAM, AND EVERY 5-FEET IN CLAY. STAKE EVERY 2-FEET AROUND CURVES.
2. PLACE (1) DRIP STAKE ON EACH FITTING IN LOOSE SANDY SOIL. PLACE DRIP STAKES ON A 60-DEGREE ANGLE (ALONG DRIPLINE), AND (2) STAKES ON 60 DEGREE ANGLE ON EACH DRIP FITTING.

1. FINISHED GRADE.
2. TIE DOWN STAKE: RAIN BIRD TDS-050 WITH BEND.
3. 3-INCH MULCH.
4. DRIPLINE.
5. DRIPPER.

4 RAIN BIRD TDS-050 (WITH BEND) DRIP STAKES

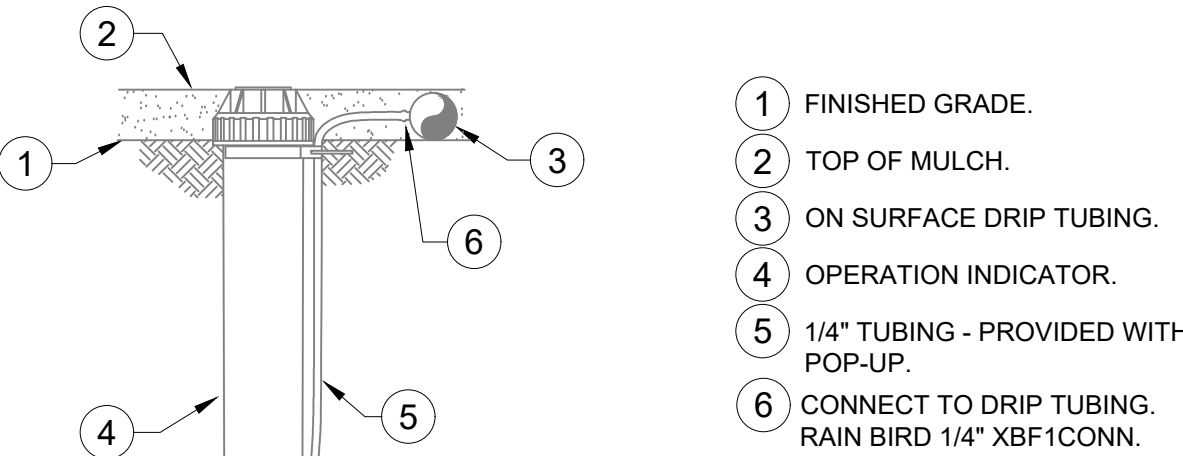
NTS

CRITICAL ANALYSIS- WELL 1

Generated:	2026-04-03 12:4
P.O.C. NUMBER: W-1 Water Source Information:	4" WELL & PUMP
FLOW AVAILABLE Point of Connection Size: Flow Available	4" 373.9 GPM
PRESSURE AVAILABLE Static Pressure at POC: Pressure Available:	50 PSI 50 PSI
DESIGN ANALYSIS Maximum Station Flow: Flow Available at POC: Residual Flow Available:	20.96 GPM 373.9 GPM 352.95 GPM
Critical Station: Design Pressure: Friction Loss: Fittings Loss: Elevation Loss: Loss through Valve: Pressure Req. at Critical Station: Loss for Fittings: Loss for Main Line: Loss for POC to Valve Elevation: Loss for Backflow: Critical Station Pressure at POC: Pressure Available: Residual Pressure Available:	2 30 PSI 4.49 PSI 0.45 PSI 0 PSI 6 PSI 40.9 PSI 0.22 PSI 2.15 PSI 0 PSI 0 PSI 43.3 PSI 50 PSI 6.7 PSI

CRITICAL ANALYSIS- WELL 2

Generated:	2026-04-03 12:4
P.O.C. NUMBER: W-2 Water Source Information:	4" WELL & PUMP
FLOW AVAILABLE Point of Connection Size: Flow Available	4" 373.9 GPM
PRESSURE AVAILABLE Static Pressure at POC: Pressure Available:	50 PSI 50 PSI
DESIGN ANALYSIS Maximum Station Flow: Flow Available at POC: Residual Flow Available:	41.0 GPM 373.9 GPM 332.91 GPM
Critical Station: Design Pressure: Friction Loss: Fittings Loss: Elevation Loss: Loss through Valve: Pressure Req. at Critical Station: Loss for Fittings: Loss for Main Line: Loss for POC to Valve Elevation: Loss for Backflow: Critical Station Pressure at POC: Pressure Available: Residual Pressure Available:	5 30 PSI 4.75 PSI 0.48 PSI 0 PSI 6 PSI 41.2 PSI 0.01 PSI 0.12 PSI 0 PSI 0 PSI 41.4 PSI 50 PSI 8.65 PSI

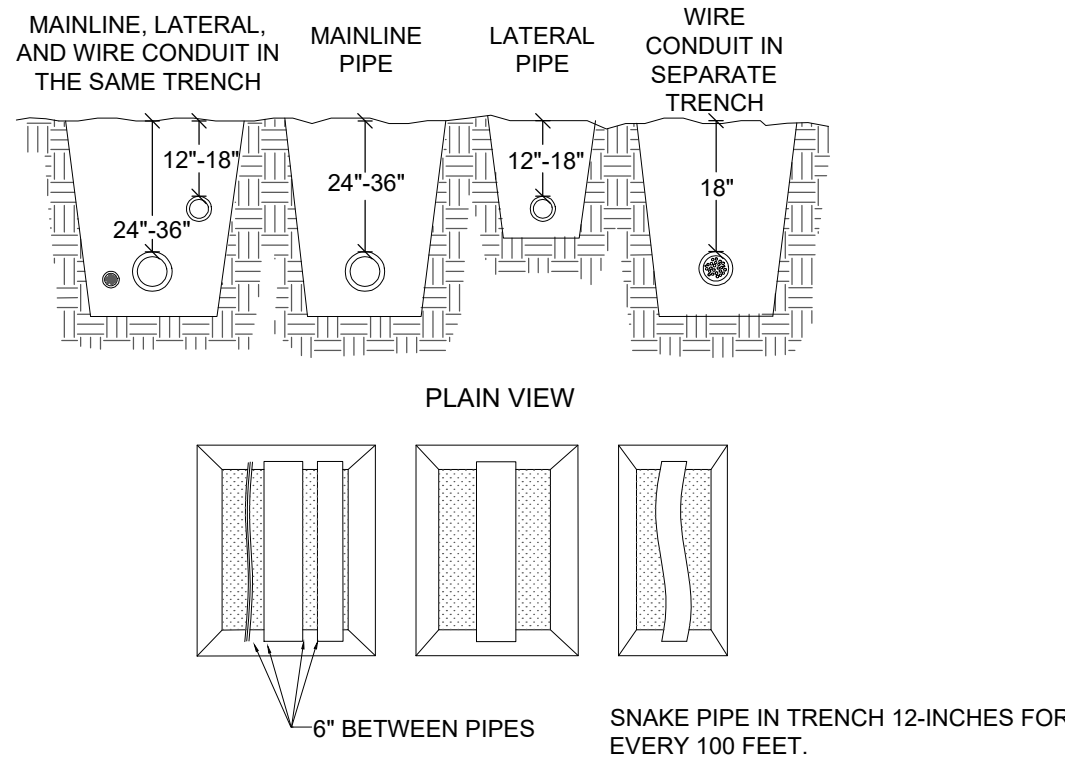


NOTES:
1. USE XERIMAN TOOL XM-TOOL TO INSERT BARB TRANSFER FITTING DIRECTLY INTO DRIPLINE TUBING.
2. VAN NOZZLE MAY BE SET TO CLOSE, OR IF IT IS DESIRED TO SEE SPRAY FROM NOZZLE, SET THE ARC TO J PATTERN. THE FLOW FROM NOZZLE MUST BE DIRECTED WITHIN PLANTING AREA, VISIBLE ENOUGH TO BE SEEN / LOCATED BY MAINTENANCE PERSON.

CONTRACTOR MUST PLACE OPERATION INDICATOR WITHIN 12-INCHES OF FLUSH POINT / VALVE ASSEMBLY. EXTEND 1/4-INCH TUBING AS NECESSARY.

2 RAIN BIRD OPERATION INDICATOR

NTS



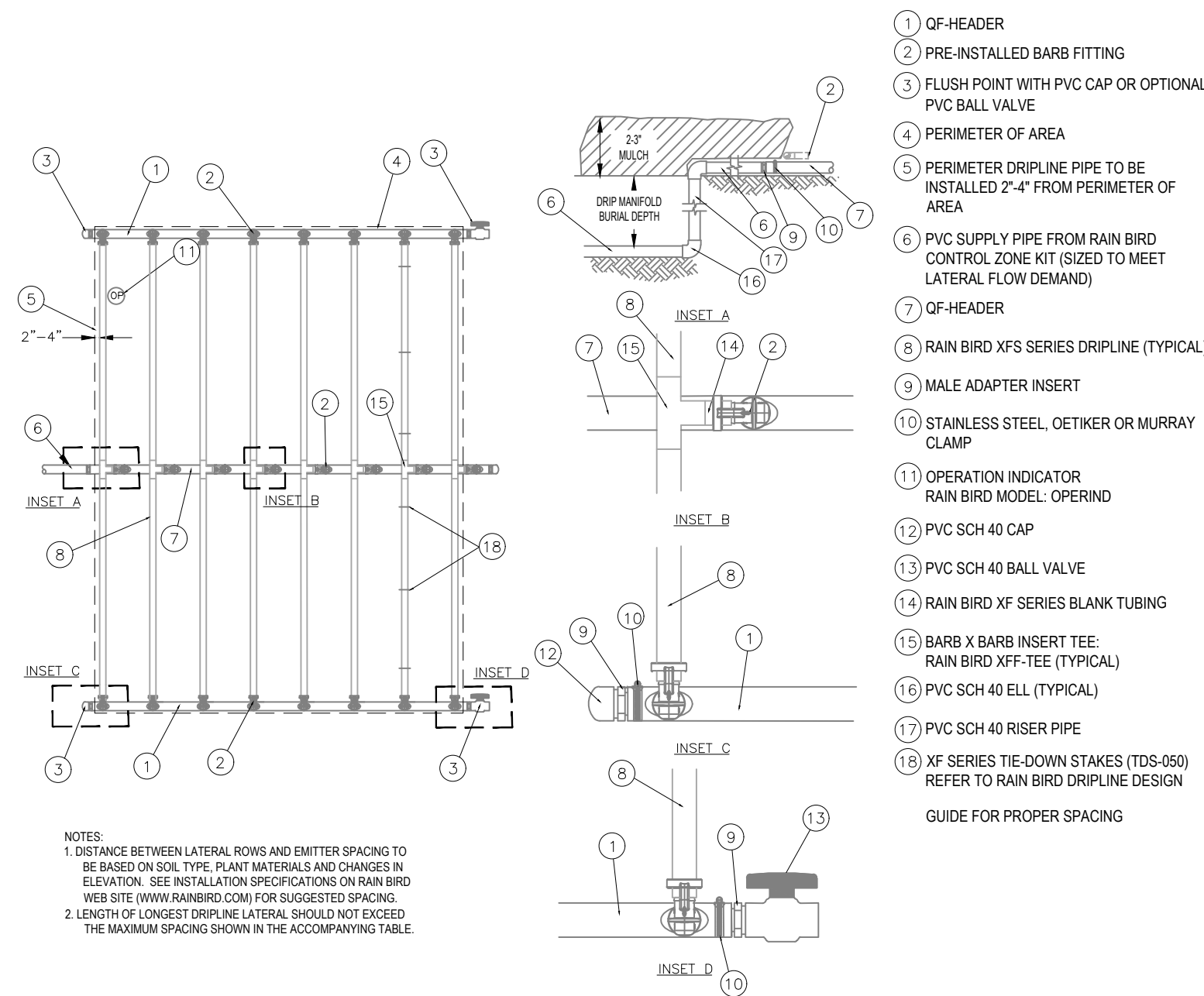
NOTE:
1. MINIMUM PIPE DEPTH SHALL BE PER DETAIL / LOCAL / STATE CODES, FROSTLINE, WITCH EVER IS MOST STRINGENT.
2. MAINLINE AND LATERAL PIPE. TYPE AND DEPTH UNLESS OTHERWISE NOTED IN SPECIFICATIONS.
3. PIPE IN THE SAME TRENCH SHALL HAVE MINIMUM 6" HORIZONTAL & VERTICAL SEPARATION.
4. IF ROCK OR OTHER DEBRIS IS ENCOUNTERED, CONTRACTOR SHALL HAVE MINIMUM IMBED PIPE 3/4"-2" IN 4" OF SAND, AND 3"-4" IN 6" OF SAND. FOR LARGER PIPE. SEE SPECIFICATIONS
5. COMPACT BACKFILL TO 95% DENSITY.
6. CONTRACTOR TO REPAIR ALL SINK HOLES AND DEPRESSIONS UNDER WARRANTY PERIOD AT NO COST TO OWNER.
7. LATERAL PIPE IN R.O.W. SHALL HAVE MINIMUM 18" COVER.

5 PIPE TRENCH DETAIL

NTS

CRITICAL ANALYSIS- WELL 3

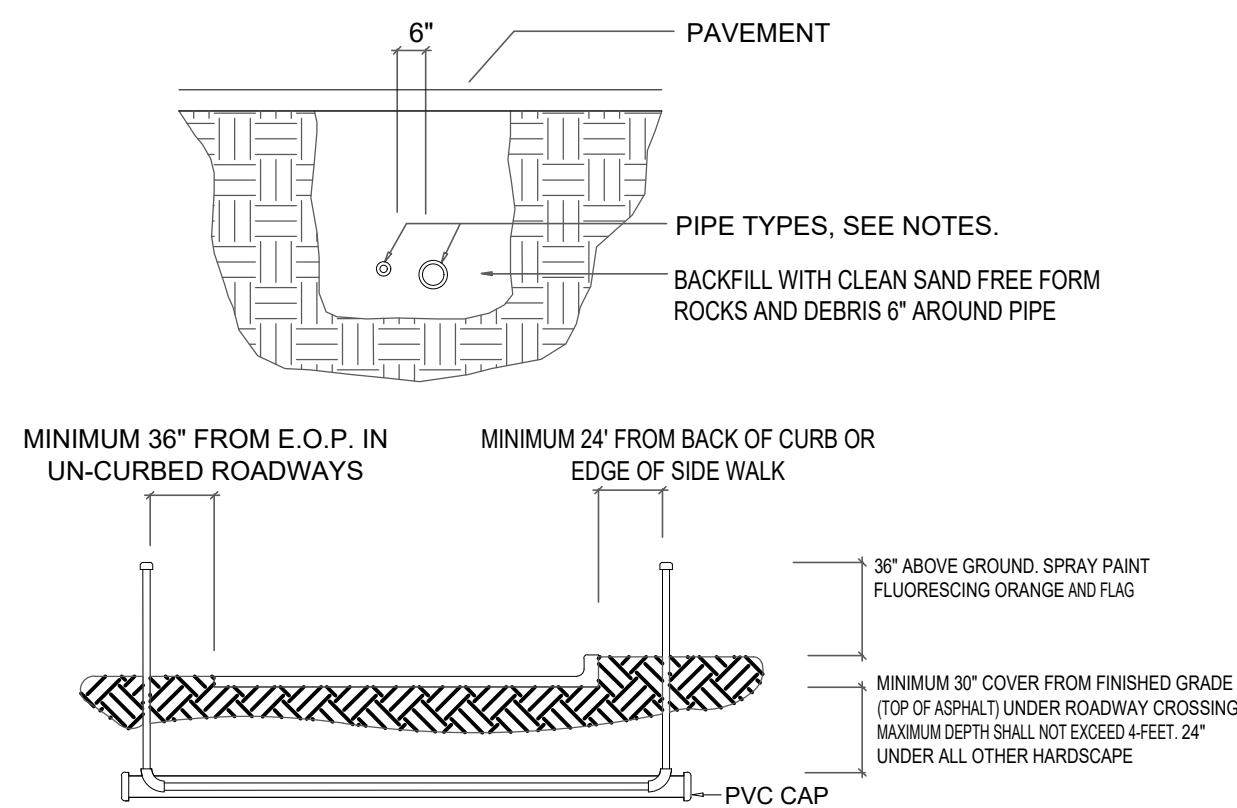
Generated:	2026-04-03 12:41
P.O.C. NUMBER: W-3 Water Source Information:	4" WELL & PUMP
FLOW AVAILABLE Point of Connection Size: Flow Available	4" 373.9 GPM
PRESSURE AVAILABLE Static Pressure at POC: Pressure Available:	50 PSI 50 PSI
DESIGN ANALYSIS Maximum Station Flow: Flow Available at POC: Residual Flow Available:	19.55 GPM 373.9 GPM 354.36 GPM
Critical Station: Design Pressure: Friction Loss: Fittings Loss: Elevation Loss: Loss through Valve: Pressure Req. at Critical Station: Loss for Fittings: Loss for Main Line: Loss for POC to Valve Elevation: Loss for Backflow: Critical Station Pressure at POC: Pressure Available: Residual Pressure Available:	10 30 PSI 4.85 PSI 0.48 PSI 0 PSI 6 PSI 41.3 PSI 0.02 PSI 0.21 PSI 0 PSI 0 PSI 41.6 PSI 50 PSI 8.43 PSI



NOTES:
1. DISTANCE BETWEEN LATERAL ROWS AND EMITTER SPACING TO BE BASED ON SOIL TYPE, PLANT MATERIALS AND CHANGES IN ELEVATION. SEE INSTALLATION SPECIFICATIONS ON RAIN BIRD WEB SITE (WWW.RAINBIRD.COM) FOR SUGGESTED SPACING.
2. LENGTH OF LONGEST DRIPLINE LATERAL SHOULD NOT EXCEED THE MAXIMUM SPACING SHOWN IN THE ACCOMPANYING TABLE.

1. QF-HEADER
2. PRE-INSTALLED BARB FITTING
3. FLUSH POINT WITH PVC CAP OR OPTIONAL PVC BALL VALVE
4. PERIMETER OF AREA
5. PERIMETER DRIPLINE PIPE TO BE INSTALLED 2'-4" FROM PERIMETER OF AREA
6. PVC SUPPLY PIPE FROM RAIN BIRD CONTROL ZONE KIT (SIZED TO MEET LATERAL FLOW DEMAND)
7. QF-HEADER
8. RAIN BIRD XFS SERIES DRIPLINE (TYPICAL)
9. MALE ADAPTER INSERT
10. STAINLESS STEEL, OETIKER OR MURRAY CLAMP
11. OPERATION INDICATOR RAIN BIRD MODEL: OPERING
12. PVC SCH 40 CAP
13. PVC SCH 40 BALL VALVE
14. RAIN BIRD XF SERIES BLANK TUBING
15. BARB X BARB INSERT TEE: RAIN BIRD XFF-TEE (TYPICAL)
16. PVC SCH 40 ELL (TYPICAL)
17. PVC SCH 40 RISER PIPE
18. XF SERIES TIE-DOWN STAKES (TDS-050) REFER TO RAIN BIRD DRIPLINE DESIGN GUIDE FOR PROPER SPACING

3 RAIN BIRD XFS-P DRIPLINE



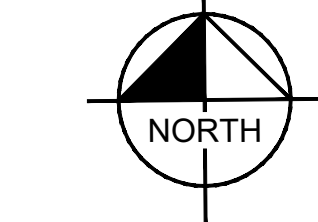
NOTE:
1. UNDER ROADWAY: ALL PVC SLEEVING SHALL BE SCH-40 PIPE FOR SIZES UP TO 4". SLEEVING 6" OR LARGER SHALL BE CL200. UNDER COUNTY AND STATE ROADWAY, ALL SLEEVES TO BE SCH-80.
2. UNDER SIDEWALK AND OTHER HARDSCAPE: ALL SLEEVING TO BE SCH-40.
3. SLEEVING TO BE TWO PIPE SIZES LARGER THAN OF CARRYING PIPE. ONLY ONE PIPE PER SLEEVE.
4. ALL JOINTS TO BE SOLVENT WELD.
5. WHERE THERE IS MORE THAN ONE SLEEVE IN TRENCH, EXTEND THE SMALLER SLEEVE TO 36" ABOVE FINISHED GRADE.
6. WHEN MULTIPLE PIPES ARE LAID IN THE SAME TRENCH, MAINTAIN MINIMUM 6" SEPARATION BETWEEN PIPE BELL JOINTS.
7. MECHANICALLY TAMP TO 95% PROCTOR.

6 ROADWAY / HARDSCAPE SLEEVING

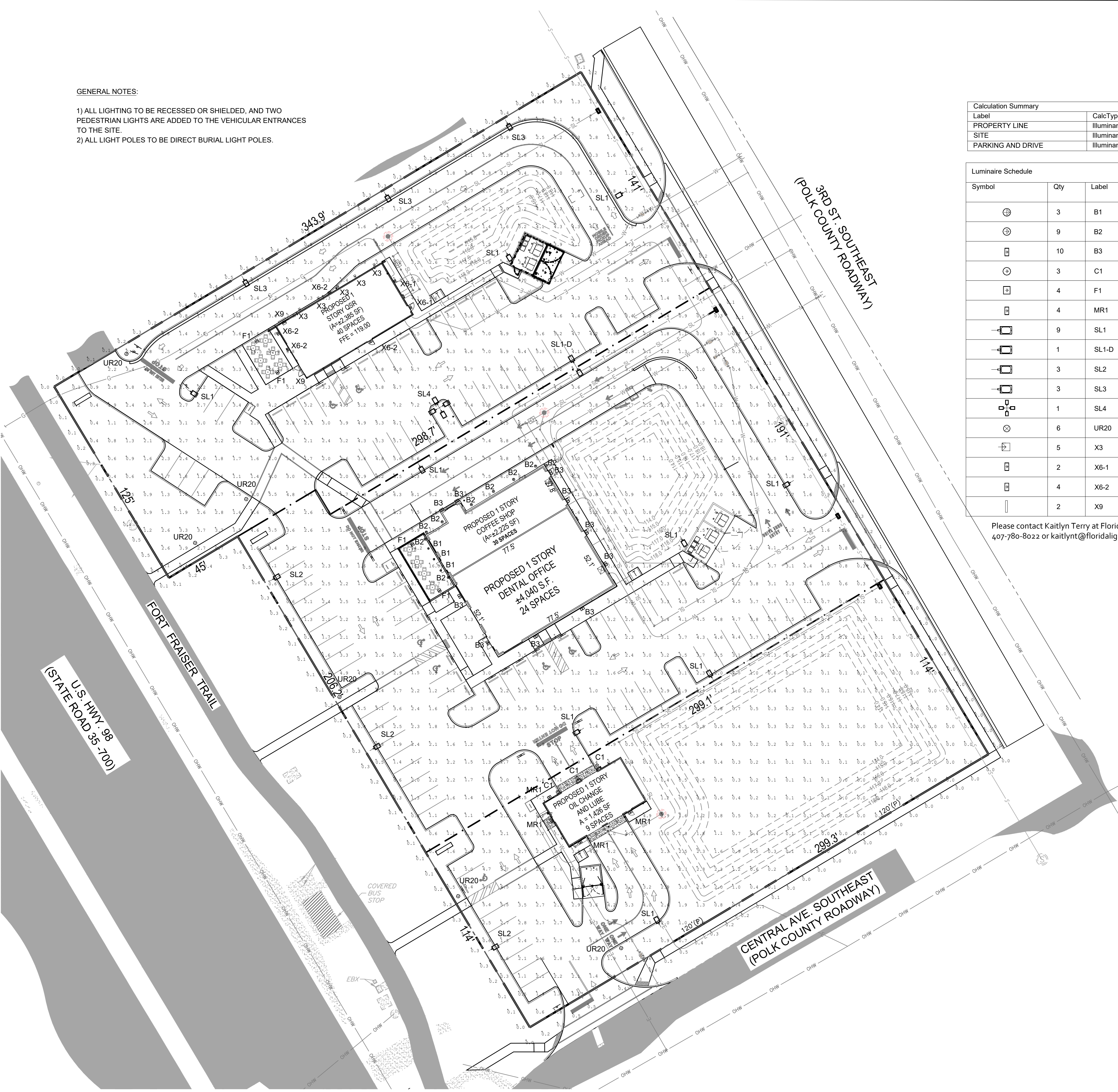
NTS

GENERAL NOTES:

- 1) ALL LIGHTING TO BE RECESSED OR SHIELDED, AND TWO PEDESTRIAN LIGHTS ARE ADDED TO THE VEHICULAR ENTRANCES TO THE SITE.
2) ALL LIGHT POLES TO BE DIRECT BURIAL LIGHT POLES.



0 30 60
SCALE FEET



Calculation Summary						
Label	CalcType	Units	Avg	Max	Min	Avg/Min
PROPERTY LINE	Illuminance	Fc	0.24	1.0	0.0	N.A.
SITE	Illuminance	Fc	2.72	29.5	0.0	N.A.
PARKING AND DRIVE	Illuminance	Fc	3.37	27.3	0.5	6.74

Luminaire Schedule										
Symbol	Qty	Label	Arrangement	Description	[MANUFAC]	LLF	Luminaire Lumens	Luminaire Watts	Total Watts	Mounting Height
⊕	3	B1	Single	NU3-RA-SW-20LM-30K-90-20D-NA-NL-WH-WH-UNV-DIM10-EM7	LEDRA BRANDS	0.950	1754	19.2	57.6	9
⊙	9	B2	Single	LTC-4RD-P-06L35K8WD-DM1-S-BL	PRESCOLITE	0.950	664	7.8	70.2	6
⊞	10	B3	Single	VPW2-48L-45-4K7-4W	BEACON	0.950	5447	47.3	236.5	12
⊕	3	C1	Single	DS-WD05	WAC LIGHTING	0.950	2180	22.694	68	8
⊞	4	F1	Single	VP-F-1-132L-39-4K7-6x6-UNV-K-BLT / RSAK10-40A-A-TA-UDP-BLS	WHITEWAY LIGHTING	0.950	4794	37.3	149.2	10
⊞	4	MR1	Single	MRW-LED	LITHONIA	0.950	2713	20.5	82	10
⊞	9	SL1	Single	VP-1-160L-135-4K7-4W-UNV-A5-DBT / GENERAL STRUCTURES #CPA-4-6018-25-EMB	BEACON	0.950	16878	135	810	25
⊞	1	SL1-D	Back to Back	VP-1-160L-135-4K7-4W-UNV-A5-DBT / GENERAL STRUCTURES #CPA-4-6018-25-EMB	BEACON	0.950	16878	135	810	25
⊞	3	SL2	Single	VP-1-160L-135-4K7-4W-UNV-A5-DBT-BC / GENERAL STRUCTURES #CPA-4-6018-25-EMB	BEACON	0.950	9442	135	540	25
⊞	3	SL3	Single	VP-1-160L-75-4K7-3-UNV-A5-DBT-BC / GENERAL STRUCTURES #CPA-4-6018-25-EMB	BEACON	0.950	5885	72	144	25
⊞	1	SL4	4 @ 90 Degrees	VP-1-160L-135-4K7-4W-UNV-A5-DBT / GENERAL STRUCTURES #CPA-4-6018-25-EMB	BEACON	0.950	17605	135	540	25
⊞	6	UR20	Single	UR20-24L-65-4K7-4W-FM33-BLS-7PR-BC / RSAK12-40A-A-TA-UDP-BLS	KIM LIGHTING	0.950	4481	65	390	12
⊞	5	X3	Single	ARM-S4-AB-3K-UNV-NA-JBOX	Performance in Lighting	0.950	17	2.1	10.5	10
⊞	2	X6-1	Single	VPW2-48L-20-4K7-4W-UNV-DBT-E	BEACON	0.950	2713	20.5	41	15
⊞	4	X6-2	Single	VPW2-48L-20-4K7-4W-UNV-DBT	BEACON	0.950	2713	20.5	82	15
⊞	2	X9	Single	AMC-2410-S W/ OPAL LENS AND END CAPS FLEXSR-45-30-67-24	PARADIGM LED	0.950	2713	45	82	15

Please contact Kaitlyn Terry at Florida Lighting Associates for quotation of fixtures.
407-780-8022 or kaitlynt@floridalightingassociates.com

4255 CLUBHOUSE RD SE
LAKELAND, FL
& 5433 3RD ST
HIGHLAND CITY, FL

POLK COUNTY

FLORIDA

DATE
05/04/26

PROJECT NO.

SHEET NUMBER
L-3.0

SCALE AS NOTED
DESIGNED BY
DRAWN BY
CHECKED BY

OR
OR
OR
OR

ALPHA PACIFICA LLC
LANDSCAPE ARCHITECTURE + WATER FEATURES
4014 E. FARIBANKS AVENUE, WINTER PARK, FLORIDA 32789
(407) 588-8622 OFFICE ALPHA.PACIFIC@GMAIL.COM

PER CLIENT COMMENTS

REVISIONS

DATE

BY



VIPER Floodlight

VIPER LUMINAIRE

FEATURES

- Low profile LED floodlighting luminaire with a variety of NEMA distributions for lighting applications such as accent lighting, sign lighting, distribution center, and general area lighting.
- Featuring two different optical technologies, Strike and Micro Strike Optics, which provide the best distribution patterns for retrofit or new construction.
- Vibration rated for high vibration applications including bridges and overpasses. All housing sizes are rated for 1.5G.
- Control options including photo control, occupancy sensing, NX Lighting Controls, Wiscap and 7-Pin with networked controls.
- New customizable lumen output feature allows for the wattage and lumen output to be customized in the factory to meet whatever specification requirements may entail.
- Field interchangeable mounting provides additional flexibility after the fixture has shipped.



CONTROL TECHNOLOGY



SPECIFICATIONS

CONSTRUCTION

- Die-cast housing with hidden vertical heat fins are optimal for heat dissipation while keeping a clean smooth outer surface.
- Corrosion resistant, die-cast aluminum housing with 1000 hour powder coat paint finish.
- External hardware is corrosion resistant.

OPTICS

- Micro Strike Optics (132, 264, 360, or 540 LED counts) maximize uniformity in retrofit applications and come standard with mid-power LEDs which evenly illuminate the entire luminous surface area to provide a low glare appearance. Catalog logic found on page 2.
- Strike Optics (36, 72, 108, or 162 LED counts) provide best in class distributions and maximum pole spacing in new construction applications with high powered LEDs. Strike optics are held in place with a polycarbonate bezel to mimic the appearance of the Micro Strike Optics so both solutions can be combined on the same application. Catalog logic found on page 3.
- One-piece silicone gasket ensures a weatherproof seal.

INSTALLATION

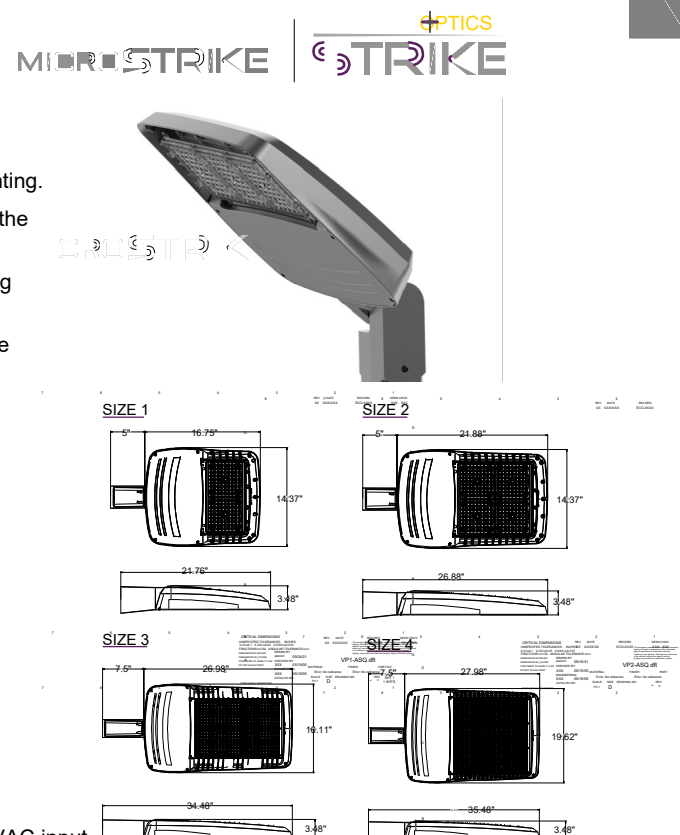
- Mounting patterns for each arm can be found on page 8.
- All mounting hardware included.
- Knuckle arm filter option available for 2-3/8" OD tenon.
- Control options are only available on the knuckle mount option and must be installed on a vertical tenon.
- Micro Strike flood configurations may be aimed up, but must have at least a 30° to allow for water to shed.

ELECTRICAL

- Universal 120-277 VAC or 347-480 VAC input voltage, 50/60 Hz.
- Ambient operating temperature -40°C to 40°C.
- Drivers have greater than 90% power factor and less than 20% THD.
- LED drivers have output power over-voltage, over-current protection and short circuit protection with auto recovery.
- Field replaceable surge protection device provides 20kA protection meeting ANSI/IEEE C82.41.2, Category C High and Surge Location Category C3. Automatically takes fixture offline for protection when device is compromised.

CONTROLS

- Photo control, occupancy sensor programmable controls and Zigbee wireless controls available for complete on/off and dimming control.
- Please consult brand or sales representative when combining control and electrical options as some combinations may not operate as anticipated depending on your application.
- 7-pin ANSI C136.41-2013 photocell receptacle option available for twist lock photocell or wireless control modules (control accessories sold separately).
- 0-10V Dimming Drivers are standard and dimming leads are extended out of the luminaire unless control options require connection to the dimming leads. Must specify if wiring leads are to be greater than the 6" standard.
- NX Lighting Controls™ available with in fixture wireless control module, features dimming and occupancy sensor.
- LightGRID+ available with in fixture wireless control module, features dimming and occupancy sensor. Also available in 7-pin configuration.



EPA				
	Size 1	Size 2	Size 3	Size 4
30°	0.827	1.023	1.423	1.850
60°	1.419	1.837	2.419	3.080

CERTIFICATIONS				
• Listed to UL 1598 and CSA C22.2 #250.0-24 for wet locations and 40°C ambient temperatures.				
• 1.5 G rated for ANSI C136.31 high vibration applications.				
• Fixture is IP65 rated.				
• Meets IBA recommendations using 3K CCT configuration at 0 degrees of tilt.				
• This product meets federal procurement law requirements under the Buy American Act (FAR 52.225-9) and Trade Agreements Act (FAR 52.225-11). See Buy American Solutions (link to https://www.currentlighting.com/resources/american-solutions).				
• DLC® (DesignLights Consortium Qualified), with some Premium Qualified configurations. Please refer to the DLC website for specific product qualifications at www.designlights.org.				

WARRANTY

- 5 year warranty

F1 FLOOD LIGHT



LTC-4RDW

LITESTRY 4" ROUND CYLINDER

FEATURES

- 4" architectural LED downlight and wall wash cylinder delivering 600 up to 3500 lm.
- Five beam distributions from 0.3 to 1.2 Spacing Criteria.
- Quiet reflector appearance with 50° optical cutoff.
- 2700K-5000K, 80+ and 90+ CRI options.
- Available in Surface, Wall, Pendant, or Cord Mount configurations.
- Versatile canopy options for recessed and surface-mounted J-box applications.
- Variety of dimming protocol options including 0-10V, DALI, DMX, and Lutron EcoSystem.



CONTROL TECHNOLOGY



SPECIFICATIONS

CONSTRUCTION

- Seamless heavy gauge aluminum cylinder body with a clean appearance.
- Available in Surface (S), Wall (W), Pendant (P), or Cord (CM) mounting types.
- Canopy options include Conduit Canopy (CC), Power Canopy (PC), Power Conduit Canopy (PCC), or Recessed Mount Driver (RMD). (See Dimensions section for details).
- For S or CM with CC or PCC options, and P with standard, CC or PCC canopy options, use 4" octagonal junction box (by others).
- All Wall Mount: Die cast aluminum mounting arm allows direct mounting to standard 4" octagonal or square junction box.
- Pendant mount with standard canopy allows sloped ceiling up to 45°, and P with CC or PCC or PCC allows sloped ceiling up to 35° (5° for RMD).
- Select from 4 standard architectural painted finishes, Brushed Aluminum, or specified custom color.

OPTICS

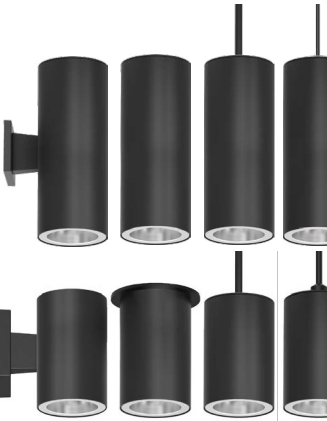
- Virtually pleasing 50° cutoff to source and source image.
- The light distribution is free of distracting bright spots or parallax and the perimeter has a smooth transition.
- Optical grade silicone lens integral to light engine.
- High purity spun aluminum reflector, self-flanged.
- Large selection of anodized finishes and colors.
- Painted cones and flange options available.

ELECTRICAL

- Chip-on-board (COB) LED with 2 SDCM.
- Multiple CCTs, 80+ or 90+ CRI.
- Long LED life: L90 at 55,000 (TM-21).
- Universal voltage 120V-277V driver, 347V optional.

C1 WALL SCONCE

DATE: LOCATION:
TYPE: PROJECT:
CATALOG #:



Typical Dimensions and Weights			
Lumen Package	"A" Diameter Inches (mm)	"B" Height Inches (mm)	Weight lbs (kg)
06L-15L	5.6 (140)	14 (356)	19.4 (8)
26L-30L	5.6 (140)	14 (356)	19.8 (8)
30L	5.6 (140)	14 (356)	20.3 (9)

See DIMENSIONS section for complete details.

CERTIFICATIONS (CONTINUED)

- EM: Certified under UL924 standard for emergency lighting and power equipment.
- EM: Emergency battery packs are California Energy Commission (CEC) Title 20 Compliant.
- For -BAA Option: This product meets federal procurement law requirements under the Buy American Act (FAR 52.225-9). See Buy American Solutions.
- For -TAA Option: Product configurations meet federal procurement law requirements under the Trade Agreements Act (FAR 52.225-11). See Buy American Solutions.

WARRANTY

- 5 year warranty

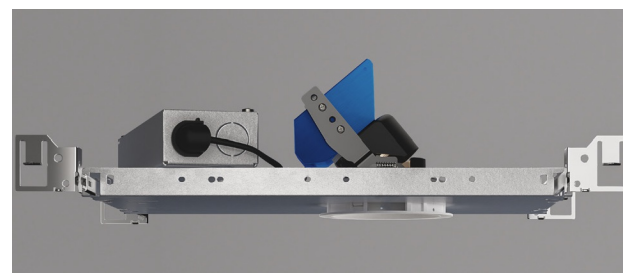
KEY DATA	
Lumen Range	600-3500
Wattage Range	8-43
Efficacy Range (LPW)	90-99*
Reported Life (Hours)	L90 / >55,000
Input Current (mA)	67-345 (120V)

*Based on Specular, 35K, 60 CRI



NU3

3" Round Adjustable Standard White



FEATURES

- True 30° Tilt with <5% beam disruption (clipping).
- Zero ceiling line obstruction at Full Tilt.
- Concentric Tilt Tracking ensures minimal light loss.
- 360° full rotation.
- UGR <5.
- Multiple mounting and glare control options.

DIMMING AND CONTROLS

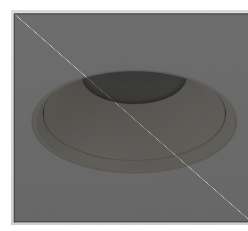
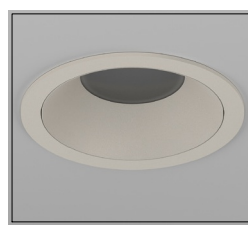
- 4x4x4 LED 0-10V, 0.1% and 1%.
- BAA - BAA compliant, flicker free 0-10V dim to 1%.
- elidoLED DALI, dim to 0.1% and 1%.
- DMX-512/RDM dim to 0%.
- Lutron H-Lume Ecosystem, dim to 1% and 0.1%.
- Leading & trailing edge (Triac/ELV), dim to 1%.
- Night control interface dim to 0%.
- Wireless control options, dim to 1% (Ref. page 13).

LED

- 90 CRI: SDCM = 2-step MacAdam Ellipse, Lumen Maintenance > 90% at 60,000 hrs.

LISTING

- UL Listed to UL 1598 & UL 2108; cUL Listed to CSA C22.2 #250.0-24 for wet locations and 40°C ambient temperatures.
- IP65 with lens - Suitable for wet locations with lens - Suitable for damp locations without lens.
- Non-conductive, dead-front construction (shower approved) emergency test switch.
- NSF/ANSI-2 with lens (Non-Food and Splash Zones).
- Declare - LBC Red List Approved.
- 5 Year Limited warranty.



Trimmed

Trimless

Trimless Millwork

B1 CANOPY LIGHT



FLEXSR OUTDOOR SERIES



FLEX SR Series is a high performance linear LED with high CRI, tight LED spacing and an economical price.

SPECIFICATION

SERIES	WATTAGE	COLOR**	IP RATING	VOLTAGE	LENGTH
FLEXSR	20±2 W/ft. 48±4 W/ft.	23-2350K 27-2700K 30-3000K 41-41000K	670+IP67 Clear outdoor	24-24 VDC	5M=196 inches (5 meter) Reel XX= Custom Length (inches)

*RGB, RGBW & OTHER COLORS AVAILABLE CONSULT FACTORY

ELECTRICAL

Input Voltage	24VDC
Dimming Options	MLV, 0-10V, DMX, Lutron
Power Consumption	2.0 or 4.5 W/ft.
Wire Size	20AWG, 2 Wire
Regulatory	UL Listed file E468751
Max Run Length per feed	
FlexSR20	44' ± (96W)
FlexSR45	22' ± (96W)

PHYSICAL

Field Cuttable	Every 2.0" (50.8mm)
Operating Temperature	-20°C (-40°F) to +50°C (+122°F)
Environment	IP67 Outdoor
Max Reel Length	FlexSR20=32' FlexSR45=16'

DIMENSIONS

FLEXSR-20	
Width	0.33" (8.00mm)
Height	0.07" (1.78mm)
Cuttable Segment Length	4.0" (100mm)
Pitch Length	0.625" (17.0mm)
FLEXSR-45	
Width	0.39" (10.05mm)
Height	0.13" (4.00mm)
Cuttable Segment Length	0.625" (17.0mm)
Pitch Length	0.09" (2.29mm)

www.paradigmled.com
303.399.0386 | sales@paradigmled.com

In an effort to continually improve our products, we reserve the right to change them without prior notice.

Rev 7.4 2/19



Project _____
Type _____

X9 CHANNEL LIGHT



SPECIFICATIONS

Certifications/Qualifications	
Class 2	Yes
Title 24 Compliant	Yes
	www.kichler.com/warranty

Dimensions	
Base Backplate	5.00 X 5.00
Extension	6.50"
Weight	3.08 LBS
Height from center of Wall opening (Spec Sheet)	6.25"
Height	12.00"
Width	5.00"

Electrical	
Input Voltage	Dual (120/140V)
Light Source	
Delivered Lumens	550
Expected Life Span (Hours)	40000
Lamp Included	Integrated
Light Source	LED
Max or Nominal Watt	15W
# of Bulbs/LED Modules	1

Mounting/Installation	
Interior/Exterior	Exterior
Location Rating	Wet
Mounting Style	Wall Mount

Photometrics	
Color Rendering Index	90
Color Temperature Range	3000
Kelvin Temperature	3000K

Finish Options	
● Textured Architectural Bronze	
● Textured Black	

FIXTURE ATTRIBUTES

Housing	
Primary Material	ALUMINUM
Product/Ordering Information	
SKU	11251BKT30
Finish Style	Textured Black
UPC	763927453103

B2 WALL SCONCE

SCALE AS NOTED

DESIGNED BY OR

DRAWN BY

CHECKED BY

PHOTOMETRIC DETAILS

4255 CLUBHOUSE RD SE
LAKELAND, FL
& 5433 3RD ST
HIGHLAND CITY, FL

FLORIDA

POLK COUNTY

DATE
05/05/26

PROJECT NO.

SHEET NUMBER

L-3.2



KNOW WHAT'S BELOW
ALWAYS CALL 811
BEFORE YOU DIG

It's fast. It's free. It's the law.

www.callsunshine.com